

# FLOWERING KALE & CABBAGE



'Red Kamome' Kale



'Red Peacock' Kale



'White Kamome' Kale



'Tokyo Red' Cabbage



'Tokyo White' Cabbage



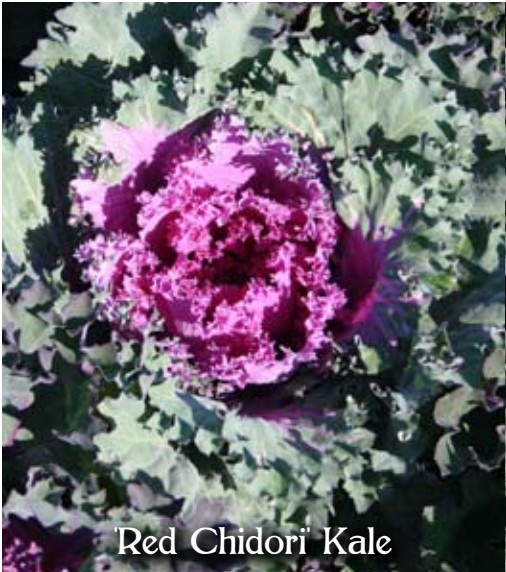
'White Peacock' Kale



'Coral Queen' Kale



'Coral Prince' Kale



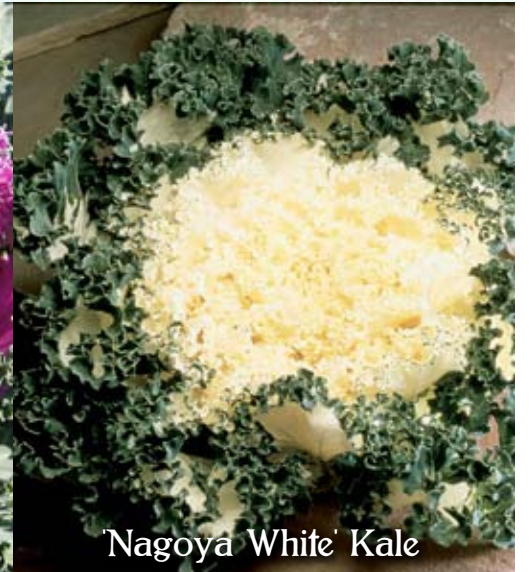
'Red Chidori' Kale



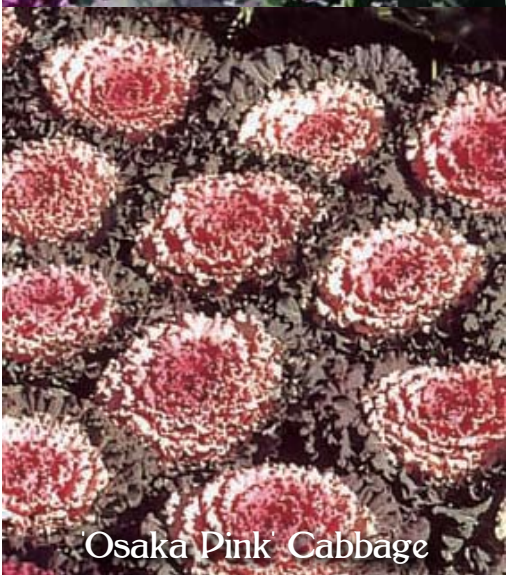
'White Chidori' Kale



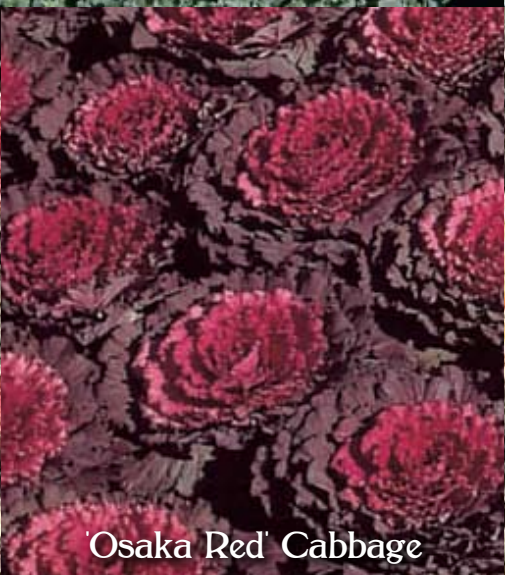
'Nagoya Red' Kale



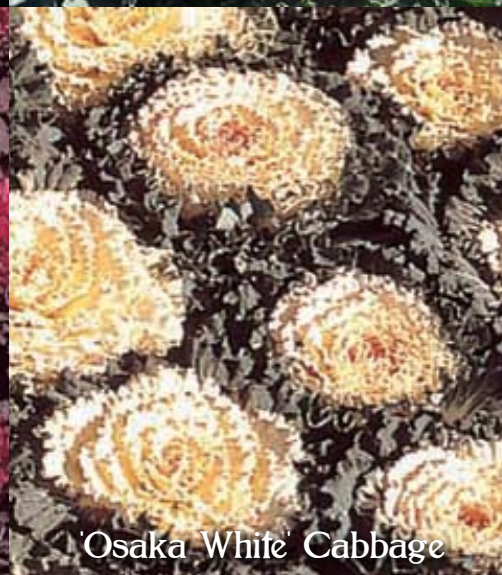
'Nagoya White' Kale



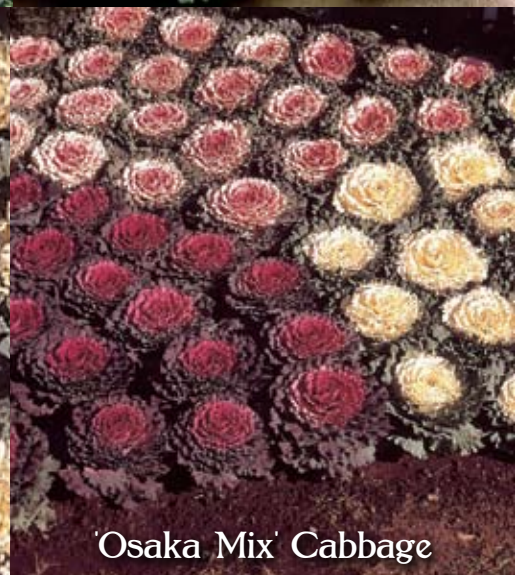
'Osaka Pink' Cabbage



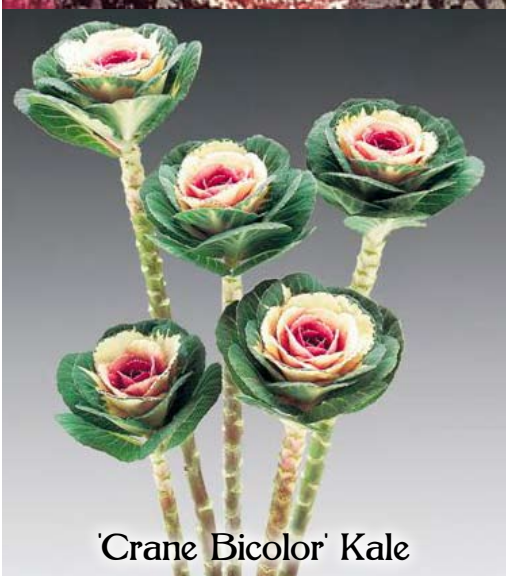
'Osaka Red' Cabbage



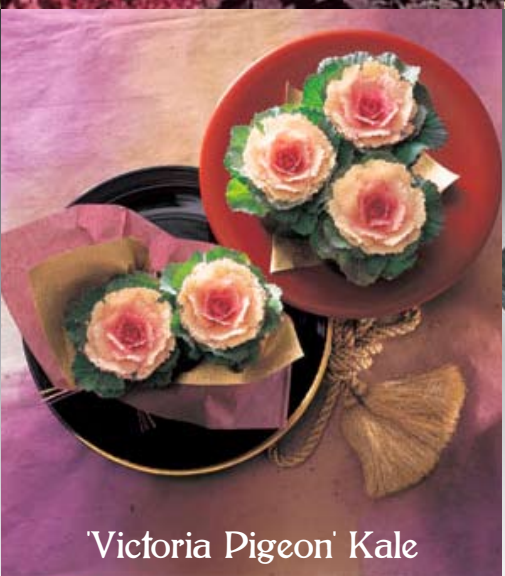
'Osaka White' Cabbage



'Osaka Mix' Cabbage



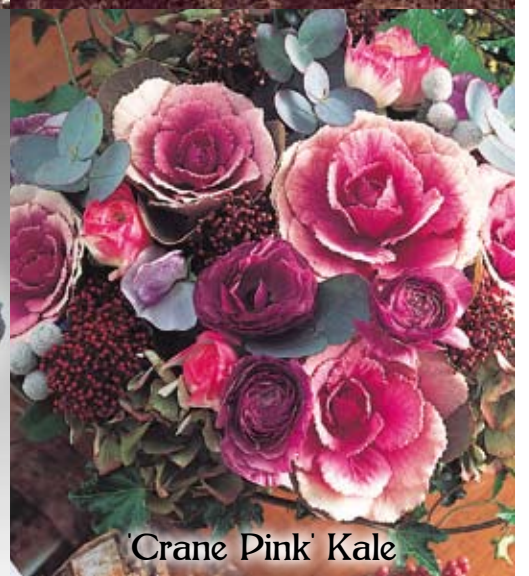
'Crane Bicolor' Kale



'Victoria Pigeon' Kale



'Crane Red' Kale



'Crane Pink' Kale

Growing Long Stemmed Ornamental Kales: Space plants closely, about 6 inches apart, to encourage elongated stems and smaller, flower sized heads. When plants are about 6 inches tall, start removing the lower leaves but allow a few upper, actively growing leaves to remain. Every week or so, remove a few more lower leaves, so that the stems are bare, topped with a large, rose like "flower." For the straightest stems, provide a stake or other support once plants are 10 to 12 inches tall. Copyright 2009 Log House Plants